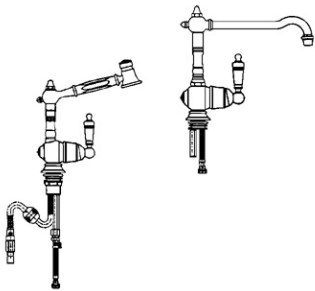


■■■ Installation instructions for  
Franke faucet with spray or swing spout



■■■ **Limited Warranty.** Congratulations on the purchase of a Franke product. Franke is one of the world's largest manufacturers of kitchen systems worldwide. Our products are manufactured using the highest degree of technology, quality and design. As a result, we are proud to offer the following warranty.

■■■ Franke, Inc., Kitchen Systems Division, warrants the quality of its faucets to be free from manufacturing defects for a period of five (5) years from the date of purchase. The flexible hose is warranted for two (2) years from the date of purchase.

■■■ This warranty applies *only* to the original owner, providing the product has been installed in accordance with our installation instructions, used as recommended and in a normal residential application. In the event of a warranty claim, the owner will be required to provide proof of purchase. This warranty covers all components which make the product operational. Franke, at its option, may repair or replace the product or components necessary to restore the product to good working condition. Franke reserves the right to inspect the installation *prior* to the actual replacement of the product or component part.

■■■ **Design.** These faucets are available in chrome chrome-brass, satin-nickel and satin-nickel/brass to match Franke sink accessories. The elegant rising spout has a high clearance from sinktop level giving plenty of room to fill or wash pots. This clearance is particularly important with counterzoned sinks where the accessories bring the bowl to countertop level when in use.

■■■ **Care of finish.** These faucets have been carefully manufactured. The chrome, chrome-brass, satin-nickel and satin-nickel/brass surfaces will maintain their appearance for a long time, provided they are cleaned using a soft cloth, water and soap. NEVER use an abrasive cleanser (liquid or powder) or any scouring pad on this faucet.

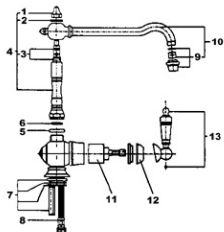
■■■ **Technical data**

Maximum water pressure:	75 PSI
Maximum hot water temperature:	175° F
Recommended hot water temperature:	150° F
Tailpipe connections:	3/8" O.D.

■■■ This warranty does not cover misuse or abuse, accidental damages, scuffs or scratches improper installation, abnormal usage, negligence or damage caused by improper maintenance or cleaning. Normal wear of parts is excluded from warranty. Damage caused by impurities or acts beyond our control are not covered. Any product or part which has been repaired or altered in any manner outside of Franke's factory, unless previously authorized in writing by Franke, will void warranty. Any replacement excludes transportation and any labor reinstallation costs. This warranty does not allow recovery of incidental or consequential damages such as loss of use, delay, property damage or other consequential damage, and Franke accepts no liability for such damages.

■■■ The Franke warranty is limited to the above conditions and to the warranty period specified herein and is exclusive. Franke **DISCLAIMS** all other warranties, expressed or implied, including the IMPLIED WARRANTIES OF MERCHANTABILITY AND/OR FITNESS FOR A PARTICULAR PURPOSE. This warranty gives you specific legal rights which may vary from state to state

## ■ ■ ■ Replacement parts for side lever sink mixer, long spout

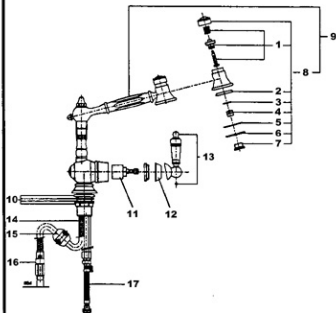


### Pos. PART NAME

### Part #

1.	Nut	OE N51163
2.	Column top ring	OE N51162
3.	ORings	OE00100NT910
4.	Spout column complete	OE00100300
5.	Column base ring	OE N51147
6.	Column seal	OE09221JC
7.	Fixation set	OE00100NT904
8.	Inlet flexible hose	OE533001
9.	Aerator complete	OE00100402
10.	Spout complete	OE0100400
11.	Ceram.disc cartridge	OE09659ASA
12.	Metal cap	OE0608003
13.	Lever complete	OE00100111

## ■ ■ ■ Replacement parts for side lever sink mixer, pullout spray



### Pos. PART NAME

### Part #

1.	Diverter	OE00100NT602
2.	Fiber seal	OE09231JC
3.	Flat seal	OE09218JC
4.	Aerator	OE09687AS
5.	Flat seal	OE09226JC
6.	Shower screen	OE0801306
7.	Aerator ring	OE N51202
8.	Diverter complete	OE00100603
9.	Spray head complete	OE00100600
10.	Fixation set	OE7617
11.	Ceram.disc cartridge	OE09659ASA
12.	Metal cap	OE0608003
13.	Lever complete	OE00100111
14.	Flexible hose	OE5661
15.	Counterweight	OE09834DI
16.	Fitting	OE2208004
17.	Inlet flexible hose	OE N6620

■■■ **Attention.** Before installing the faucet SUPPLY LINES MUST BE FLUSHED to remove scale, solder or other impurities and prevent them from entering the faucet.

### ■■■ Installation (spout model)

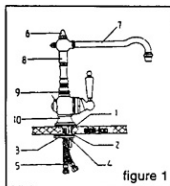


figure 1

- 1) Screw spout assembly (8) onto the body (10), being between its two stops.
- 2) Position the rubber seal (1) between the body and the sink-top.
- 3) Fit the fiber seal (2), washer (3) and nut (4) and tighten.
- 4) connect the two flexible pipes (5), with their seals in place, to the hot and cold water inlets.

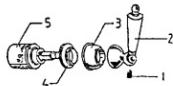
### ■■■ Replacement of "O" ring seals in the column (spout model), see figure 1:

- 1) loosen the cap nut (6) using a 20 mm spanner
- 2) lift off the washer and the swivel spout (7)
- 3) replace the 2 "O" ring seals and grease them
- 4) refit the swivel spout, the washer and the cap nut and tighten it

### ■■■ Maintenance on mechanisms (both)

Under normal operating conditions, Franke faucets do not require any maintenance. They are unaffected by scaling or corrosion.

### ■■■ Mixer cartridge replacement (both)

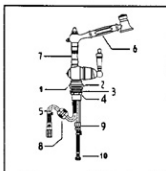


- 1) shut off the cold and hot water inlets
- 2) undo the screw (1)
- 3) take off the lever (2)
- 4) unscrew the cover (3)

- 5) undo the nut (4)
- 6) replace the cartridge (5)
- 7) refit the parts in reverse order
- 8) turn on the water inlets
- 9) check for tightness

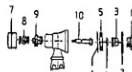
■■■ **Aerator cleaning:** if water outlet clogged with stain deposit or impurities, you can unscrew the aerator plate to clean it.

### ■■■ Installation (spray head model)



- 1) Position rubber seal (1) between the body and the sink-top.
- 2) Fit the fiber seal (2), washer (3) and tighten nut (4).
- 3) Screw the flexible hose (5) onto spray head (6) not forgetting the seal.
- 4) Insert flexible hose through center post (7).
- 5) Slide counterweight (8) over hose and fix it at bottom of loop.
- 6) Screw the rotary connector (9) on flexible hose not forgetting the seal. Do not twist flexible hose!
- 7) Connect the two flexible pipes (10), with their seals in place, to the hot and cold water supply. Turn cold and hot water on and check for tightness.

### ■■■ Diverter replacement (spray head model)



- 1) Strip in numerical order
- 2) Refit in reverse order